

1 μm
┌───┐

Mag = 10.00 K X

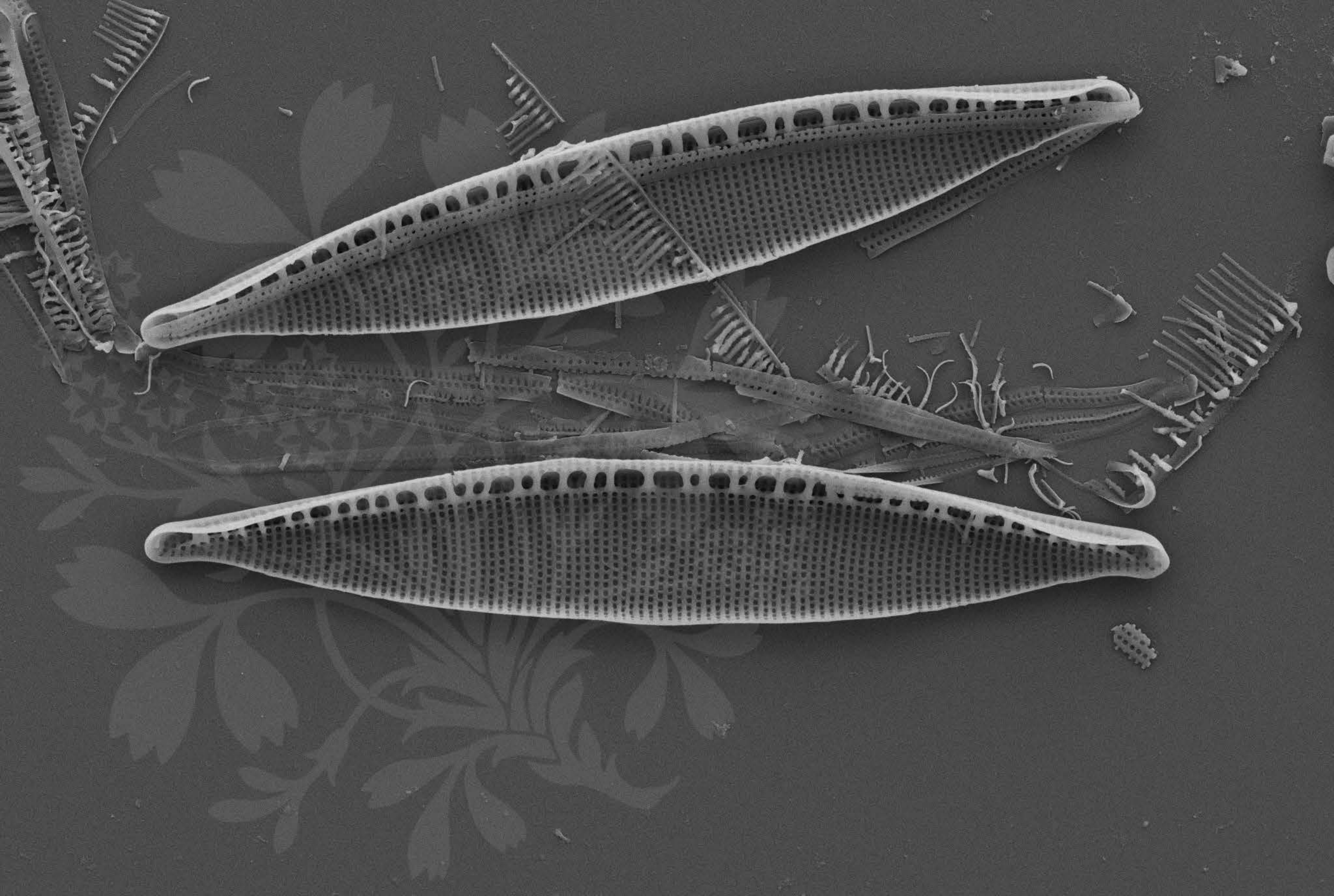
EHT = 5.00 kV

Signal A = SE2 Date :6 Jul 2015

WD = 4.3 mm

File Name = BC0330_01.tif





1 μ m
┌───┐

Mag = 8.00 K X

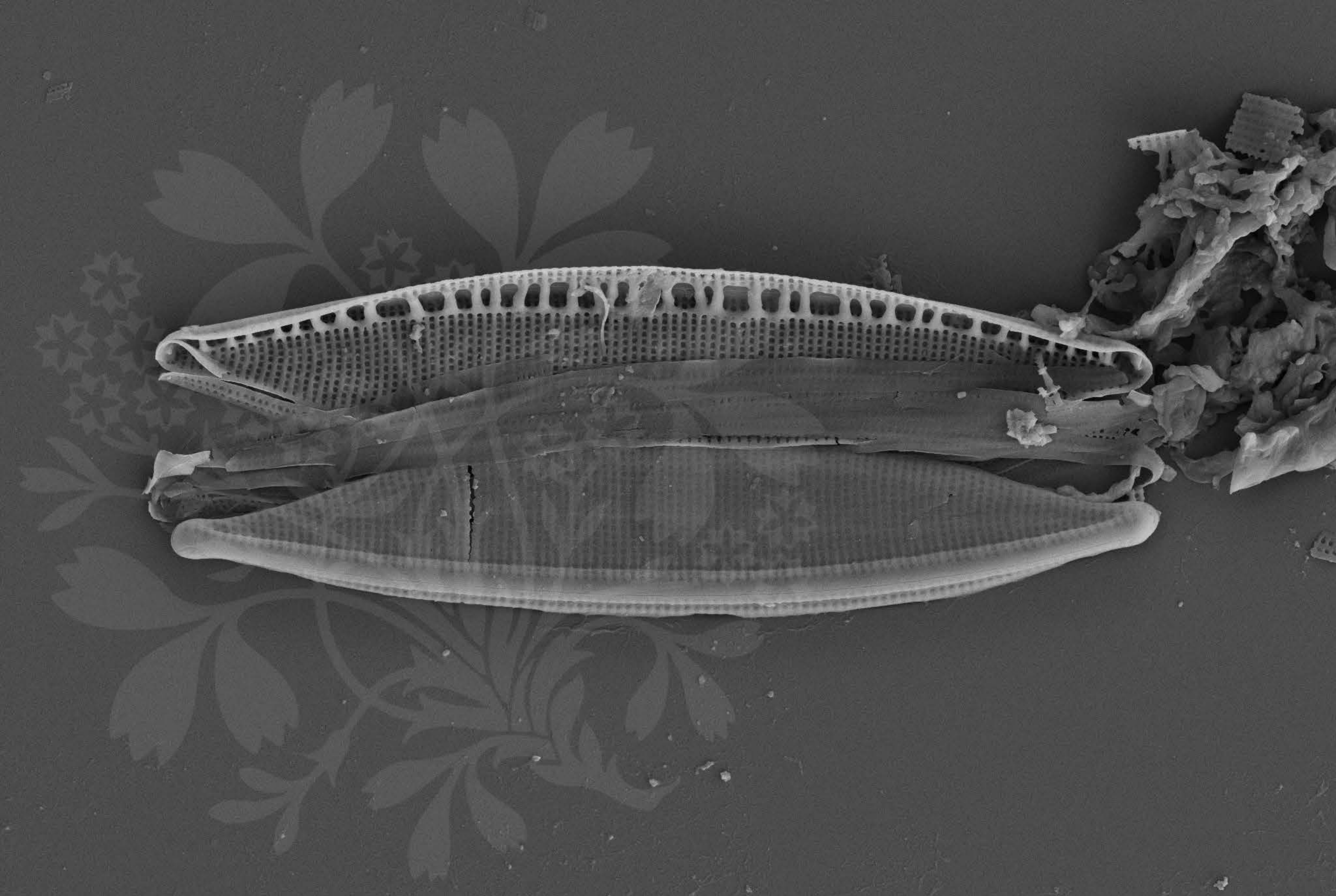
EHT = 5.00 kV

Signal A = SE2 Date :6 Jul 2015

WD = 4.3 mm

File Name = BC0330_02.tif





1 μ m
┌───┐

Mag = 8.00 K X

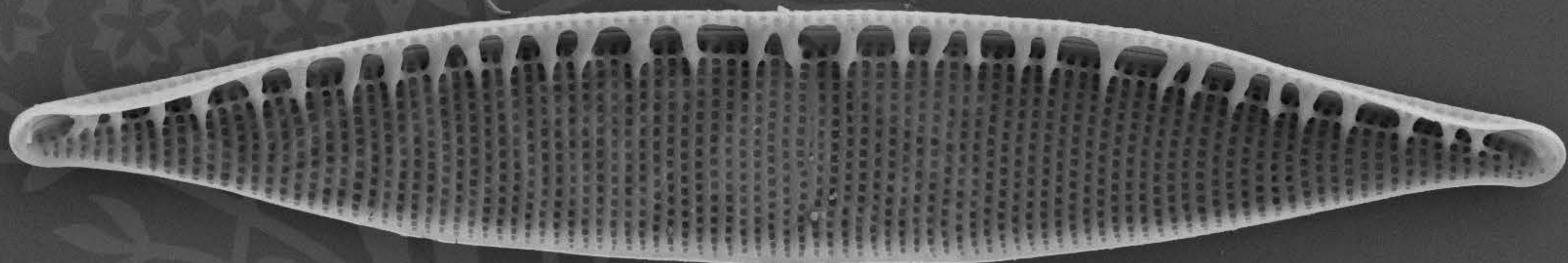
EHT = 5.00 kV

Signal A = SE2 Date :6 Jul 2015

WD = 4.4 mm

File Name = BC0330_03.tif





1 μ m
┌
└

Mag = 8.00 K X

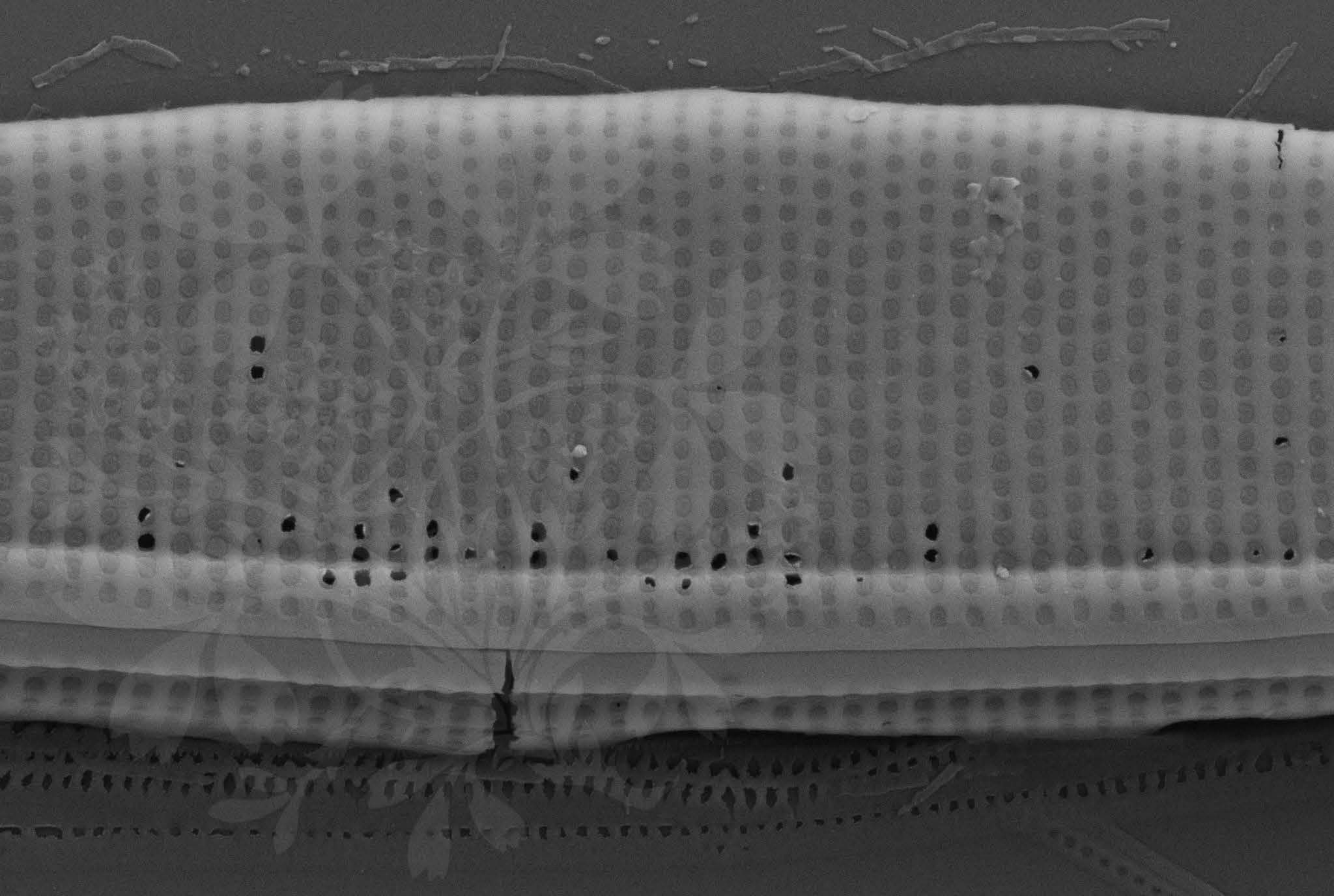
EHT = 5.00 kV

Signal A = SE2 Date :6 Jul 2015

WD = 4.4 mm

File Name = BC0330_04.tif





200 nm



Mag = 30.00 K X

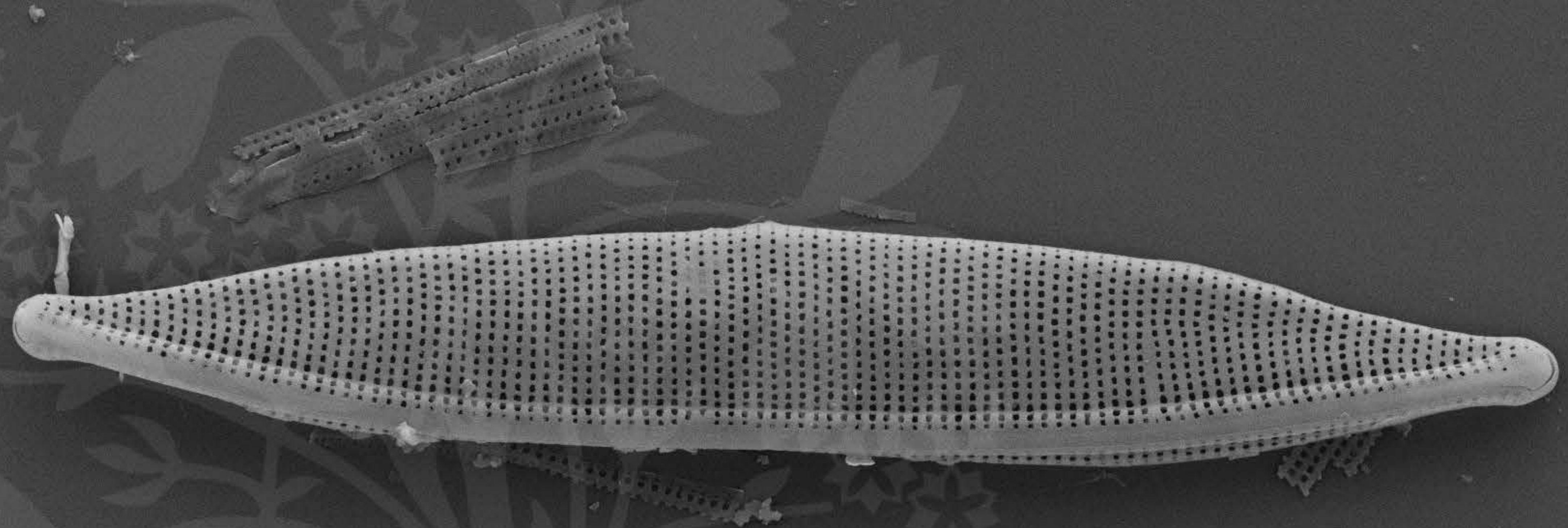
EHT = 5.00 kV

Signal A = SE2 Date :6 Jul 2015

WD = 4.4 mm

File Name = BC0330_05.tif





1 μ m
┌───┐

Mag = 8.00 K X

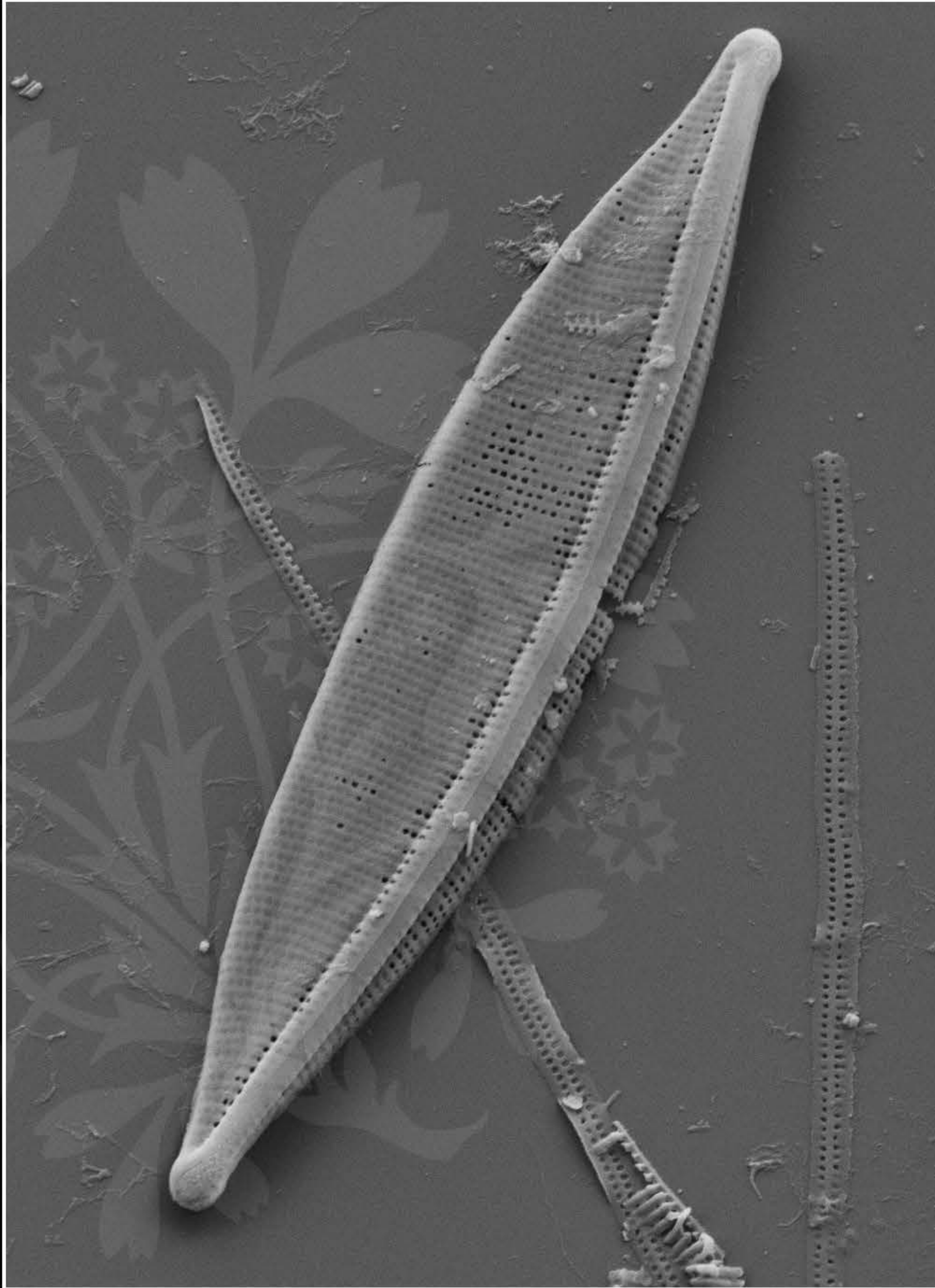
EHT = 5.00 kV

Signal A = SE2 Date :6 Jul 2015

WD = 4.3 mm

File Name = BC0330_06.tif





2 μ m
|-----|

Mag = 7.50 K X

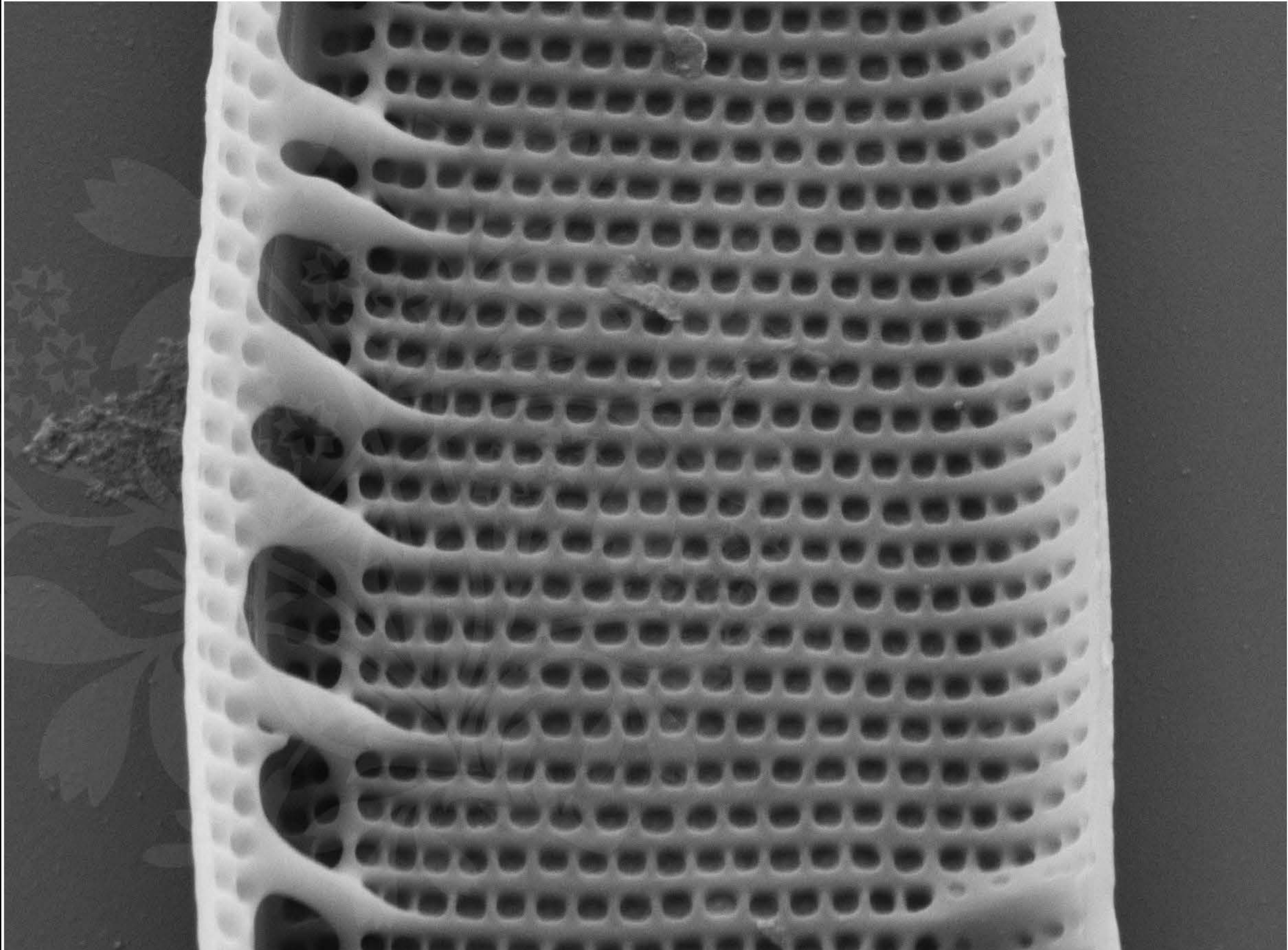
EHT = 5.00 kV

Signal A = SE2 Date :28 Feb 2018

WD = 3.8 mm

File Name = BC0330_07.tif





200 nm



Mag = 40.00 K X

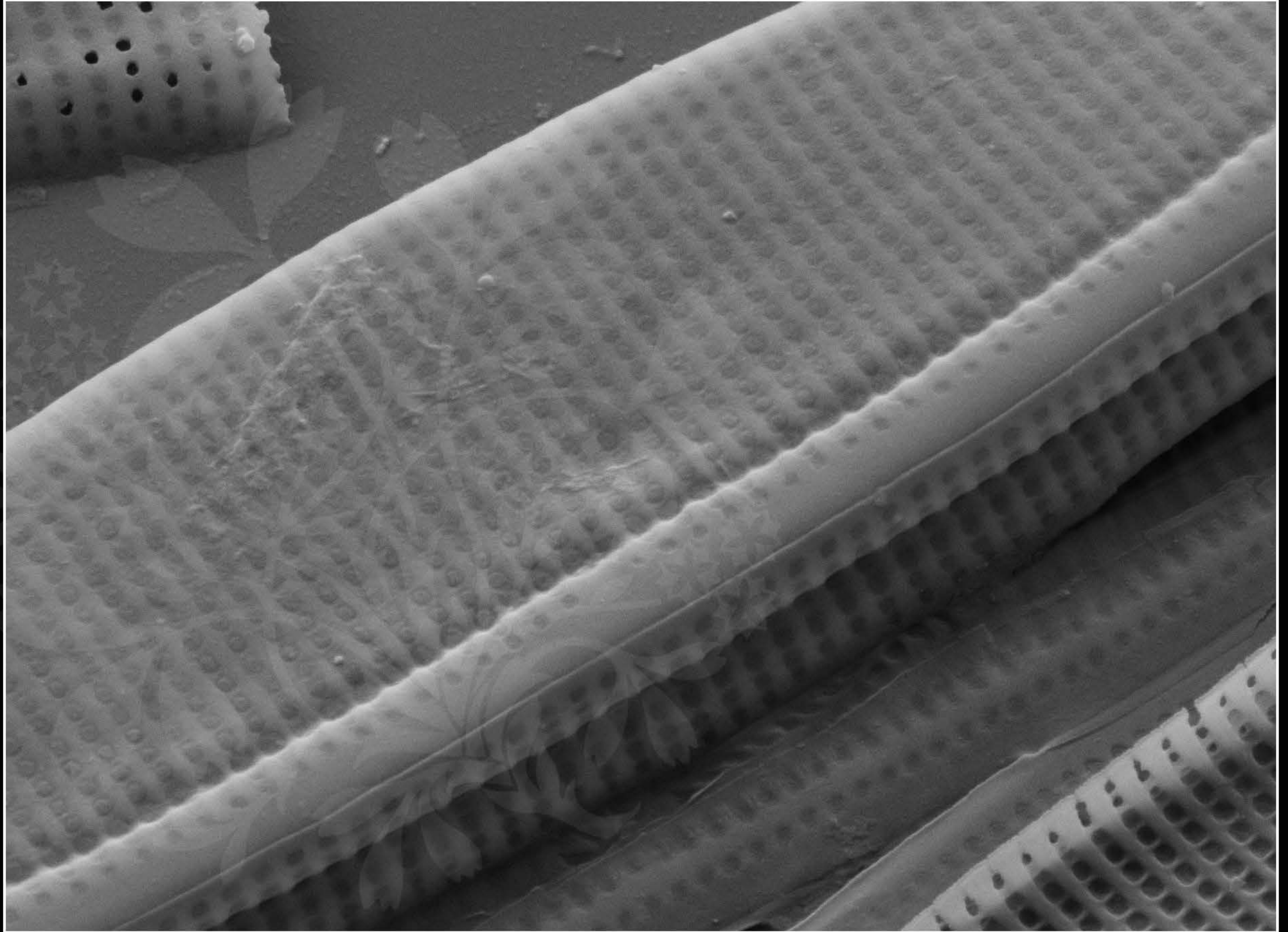
EHT = 5.00 kV

Signal A = SE2 Date :28 Feb 2018

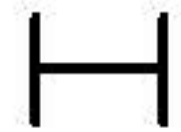
WD = 3.8 mm

File Name = BC0330_08.tif





200 nm



Mag = 30.00 K X

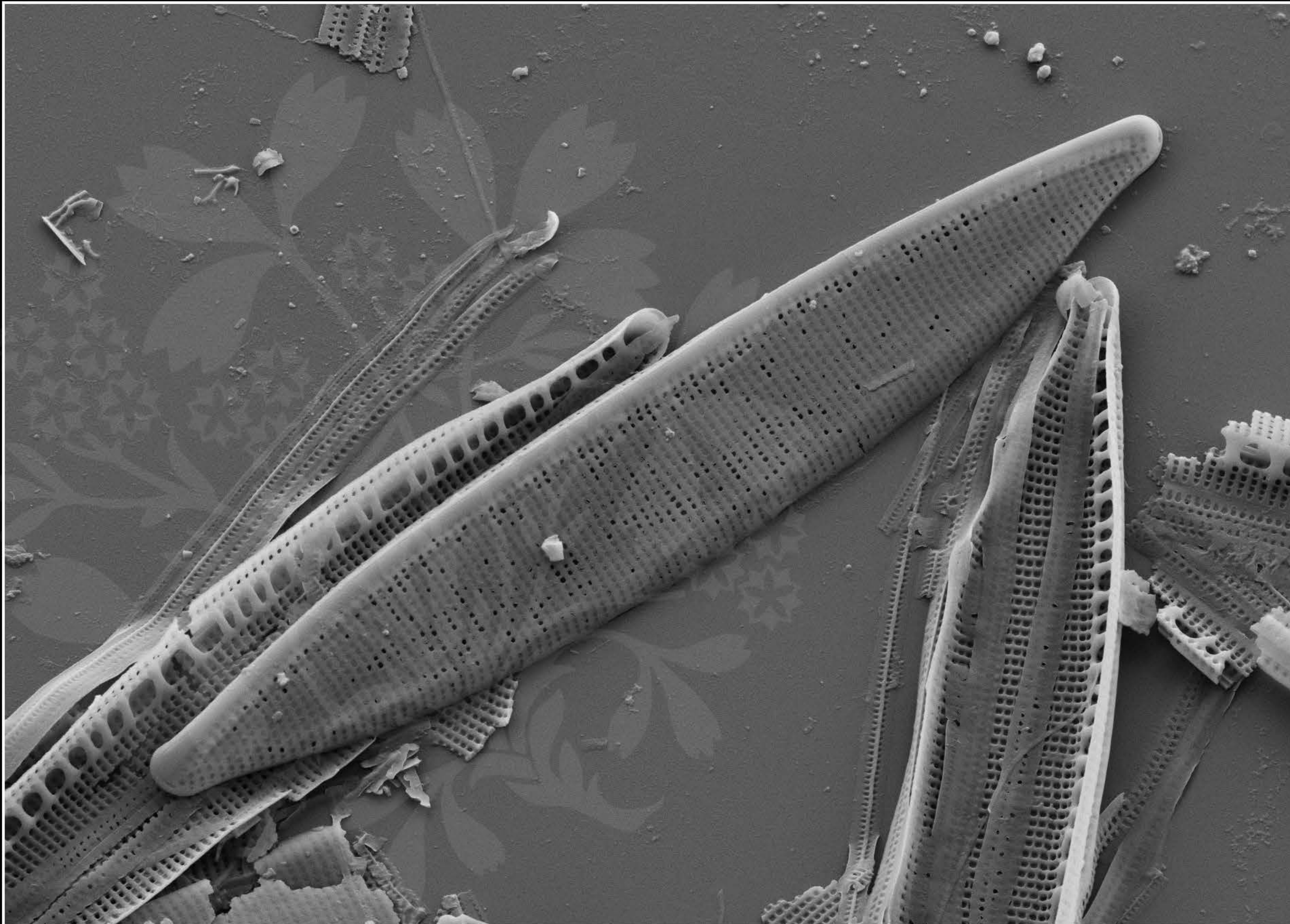
EHT = 5.00 kV

Signal A = SE2 Date :28 Feb 2018

WD = 3.8 mm

File Name = BC0330_09.tif





1 μm
┆┆┆

Mag = 9.00 K X

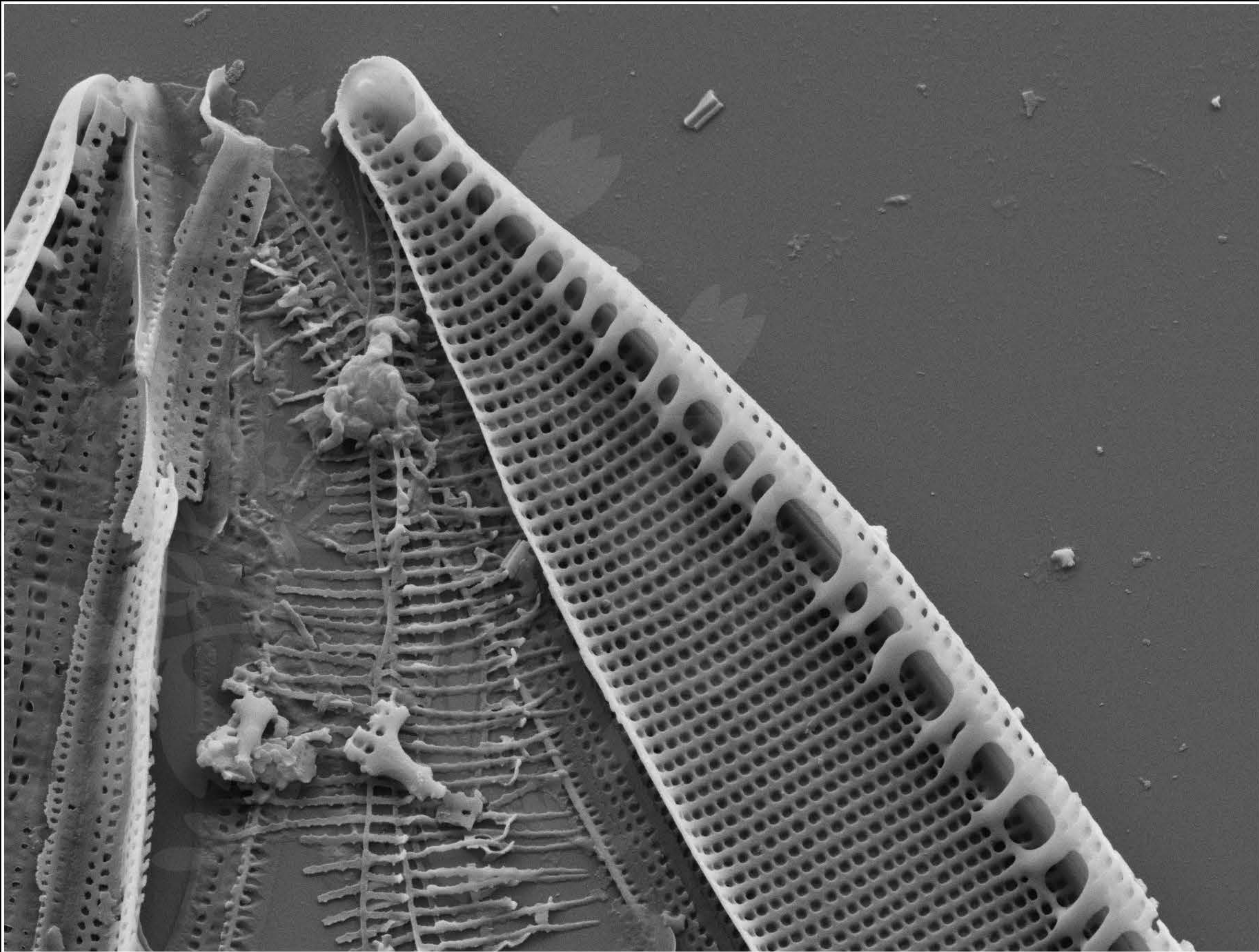
EHT = 5.00 kV

Signal A = SE2 Date :28 Feb 2018

WD = 3.8 mm

File Name = BC0330_10.tif





1 μm



Mag = 16.00 K X

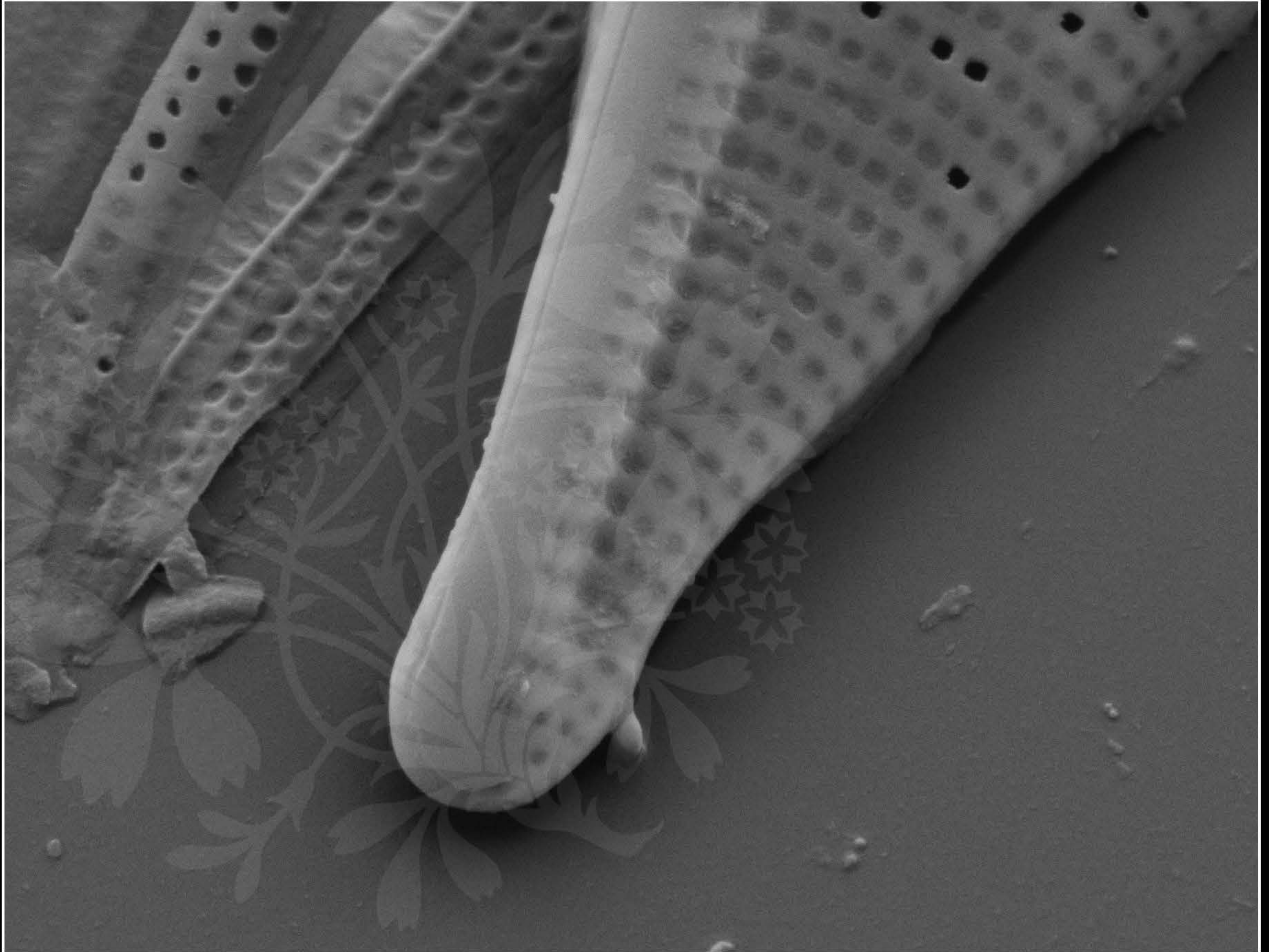
EHT = 5.00 kV

Signal A = SE2 Date :28 Feb 2018

WD = 3.8 mm

File Name = BC0330_11.tif





200 nm



Mag = 40.00 K X

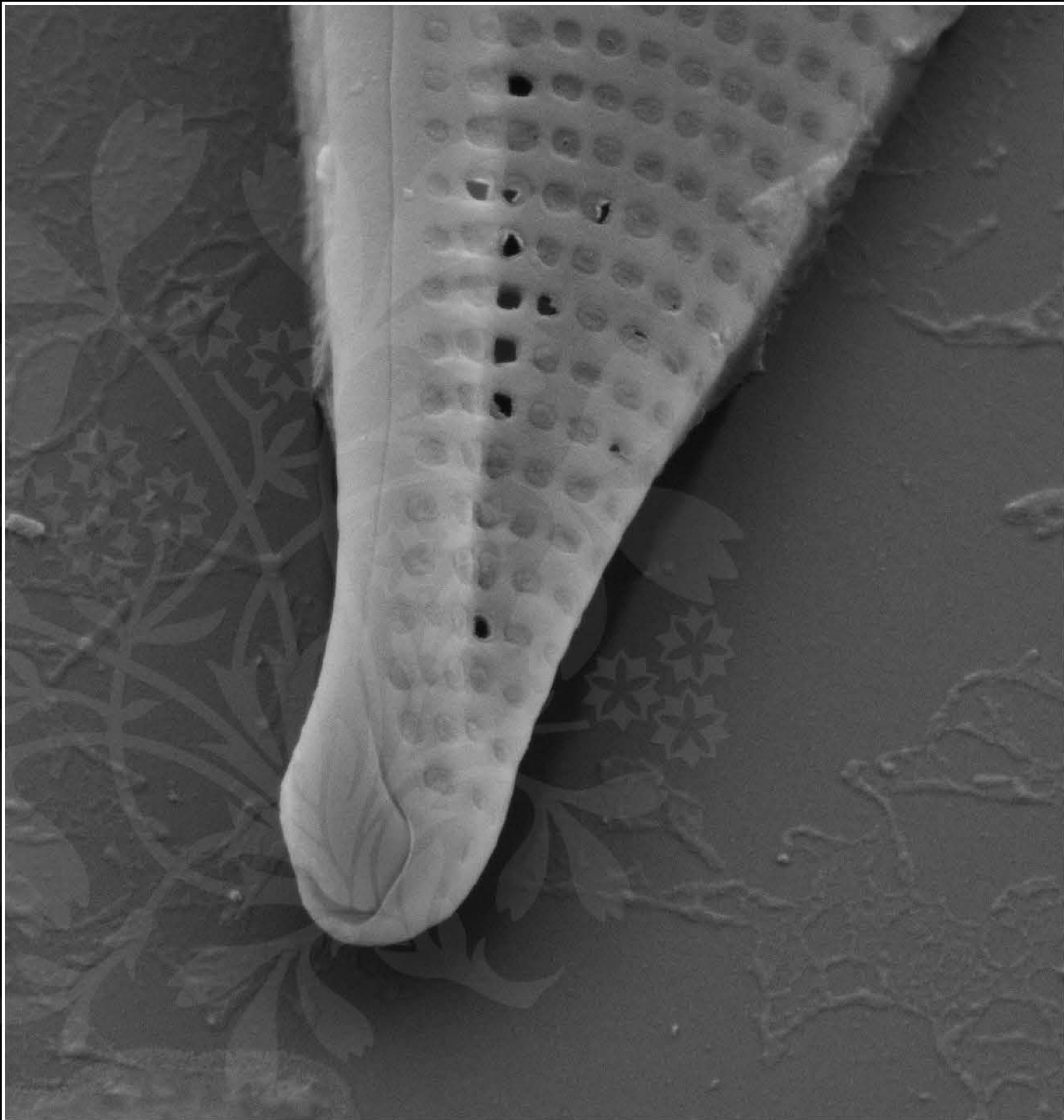
EHT = 5.00 kV

Signal A = SE2 Date :28 Feb 2018

WD = 3.8 mm

File Name = BC0330_12.tif





200 nm



Mag = 40.00 K X

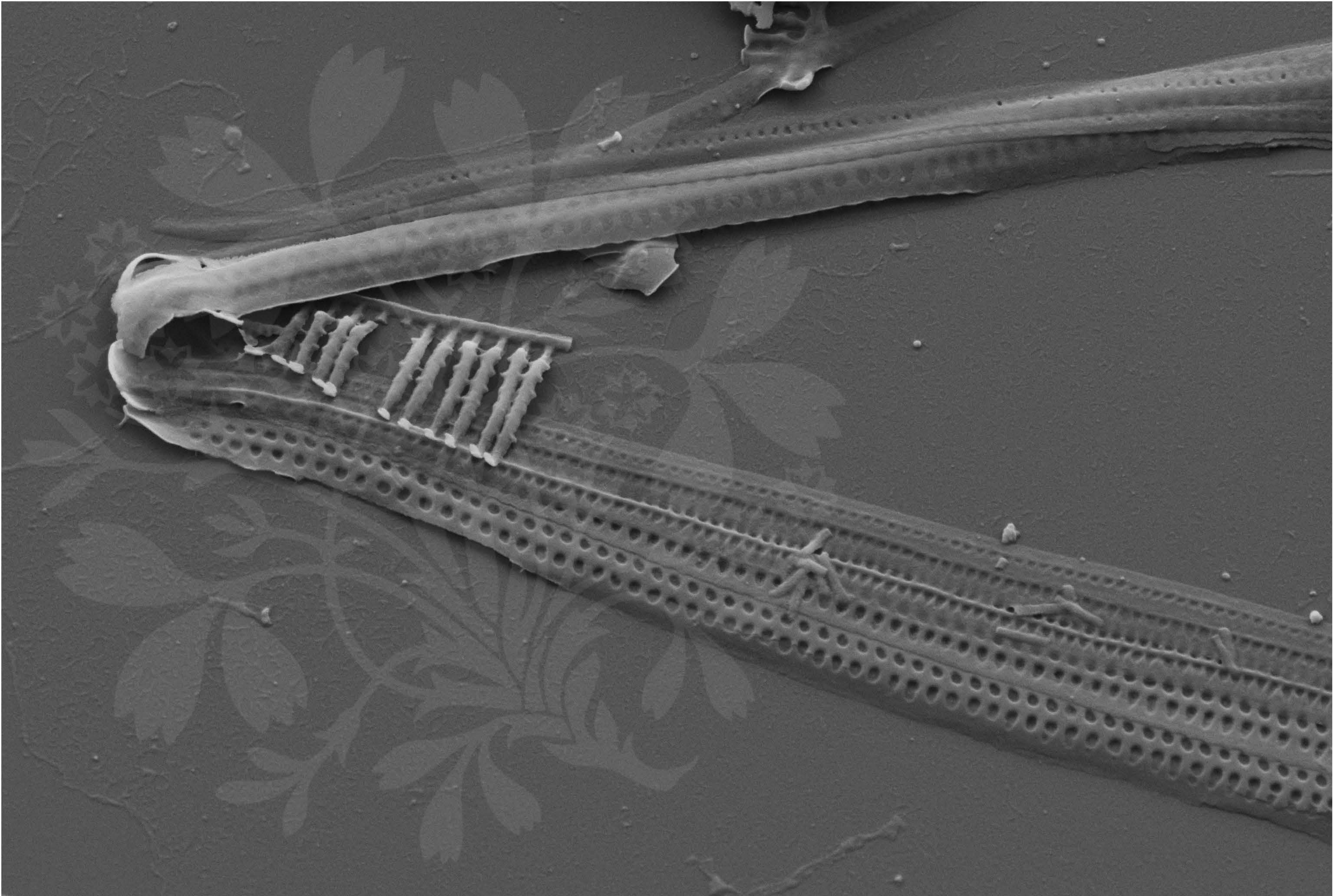
EHT = 5.00 kV

Signal A = SE2 Date :28 Feb 2018

WD = 3.8 mm

File Name = BC0330_13.tif





1 μ m



Mag = 20.00 K X

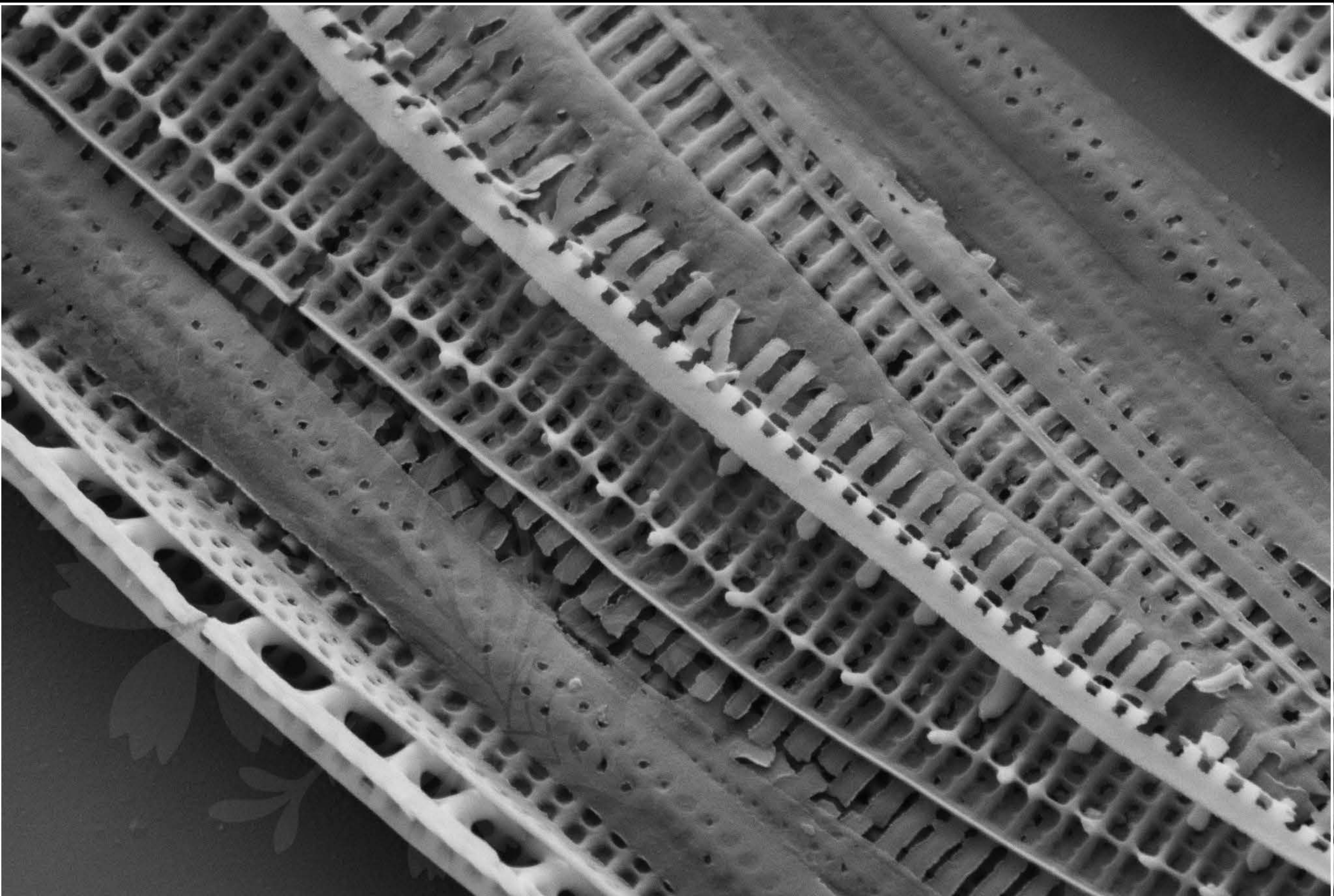
EHT = 5.00 kV

Signal A = SE2 Date :28 Feb 2018

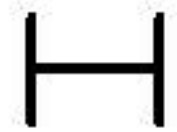
WD = 3.8 mm

File Name = BC0330_14.tif





200 nm



Mag = 30.00 K X

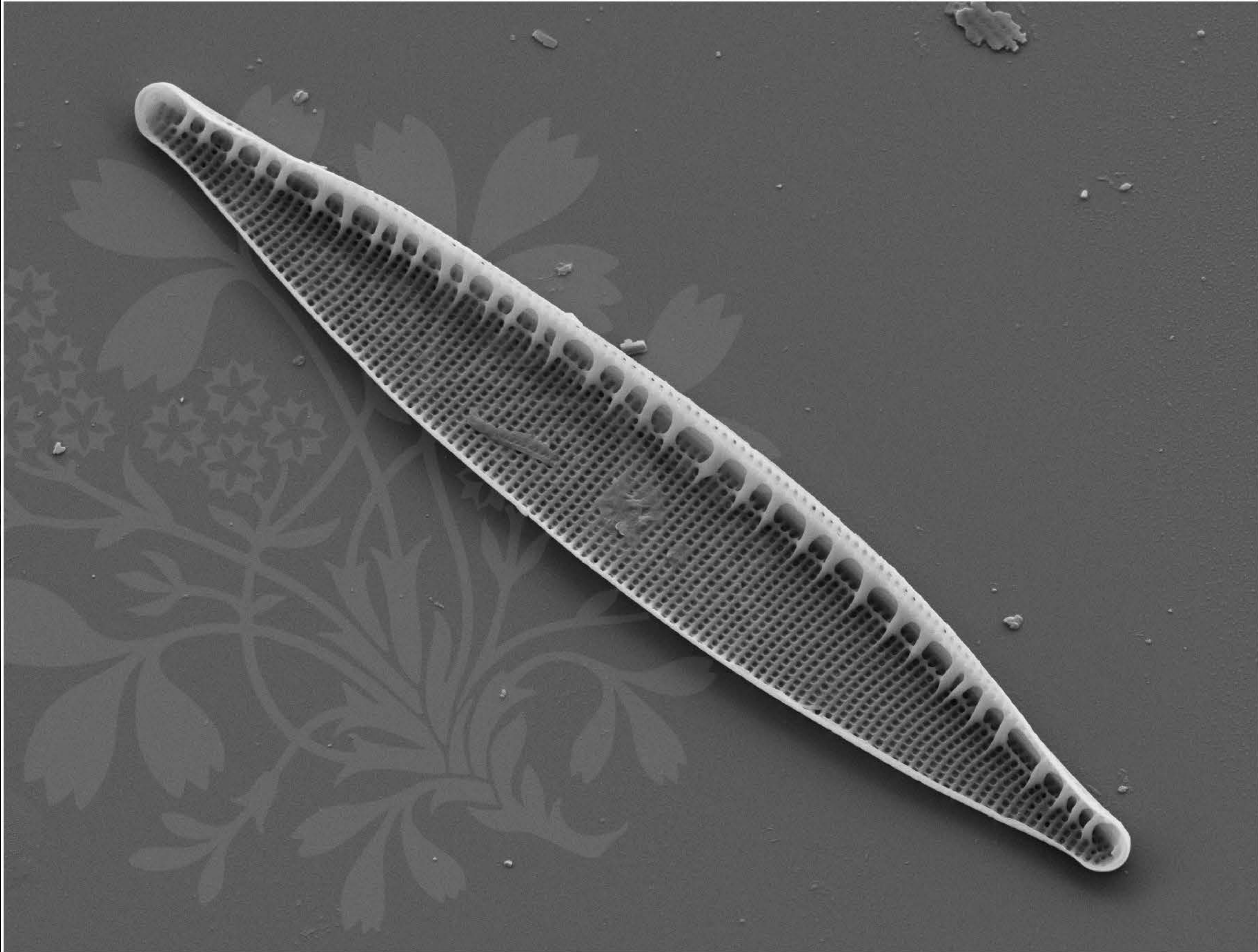
EHT = 5.00 kV

Signal A = SE2 Date :28 Feb 2018

WD = 3.8 mm

File Name = BC0330_15.tif





1 μm
┌───┐

Mag = 9.00 K X

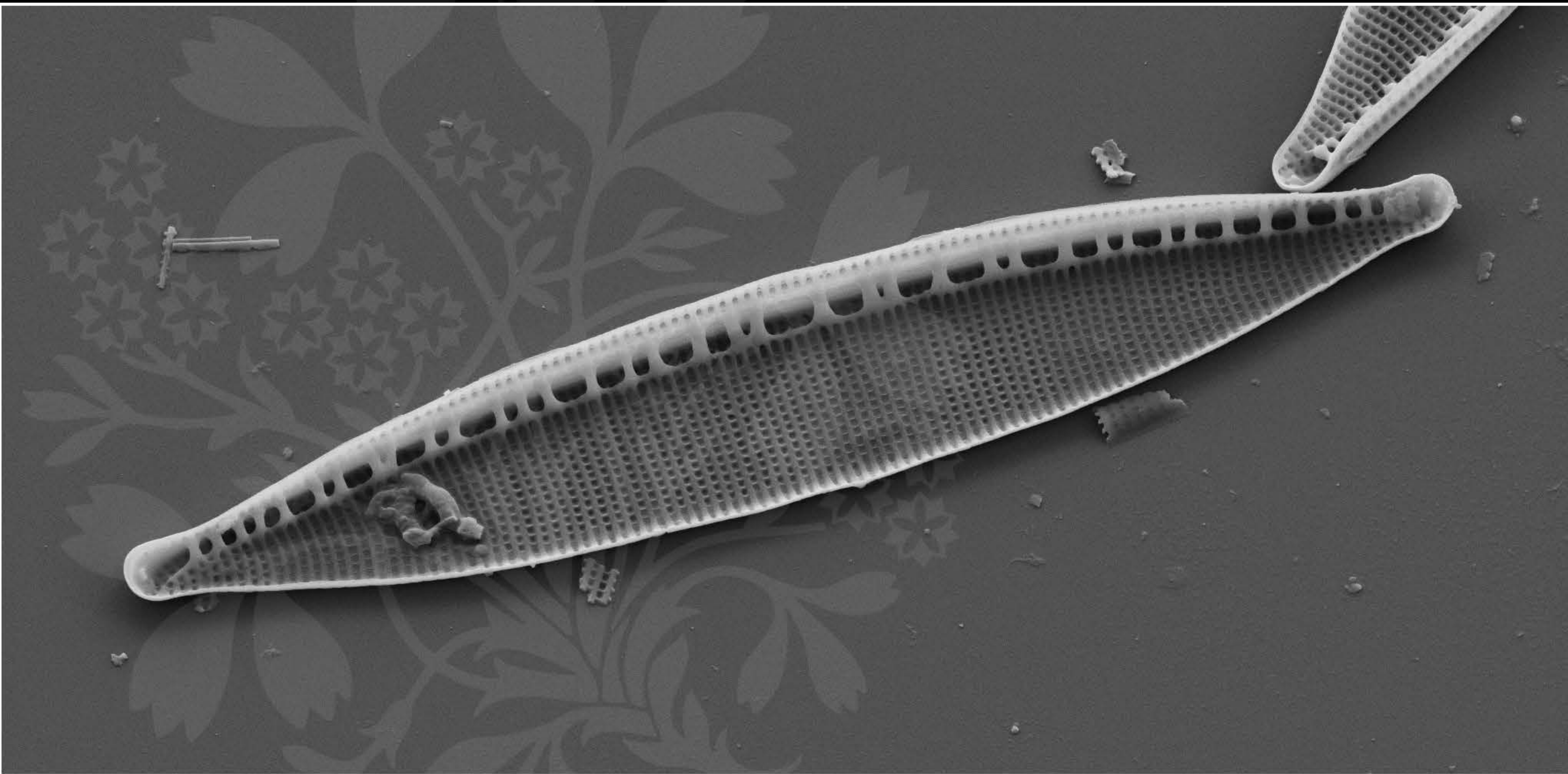
EHT = 5.00 kV

Signal A = SE2 Date :28 Feb 2018

WD = 3.8 mm

File Name = BC0330_16.tif





1 μm
┌───┐

Mag = 9.00 K X

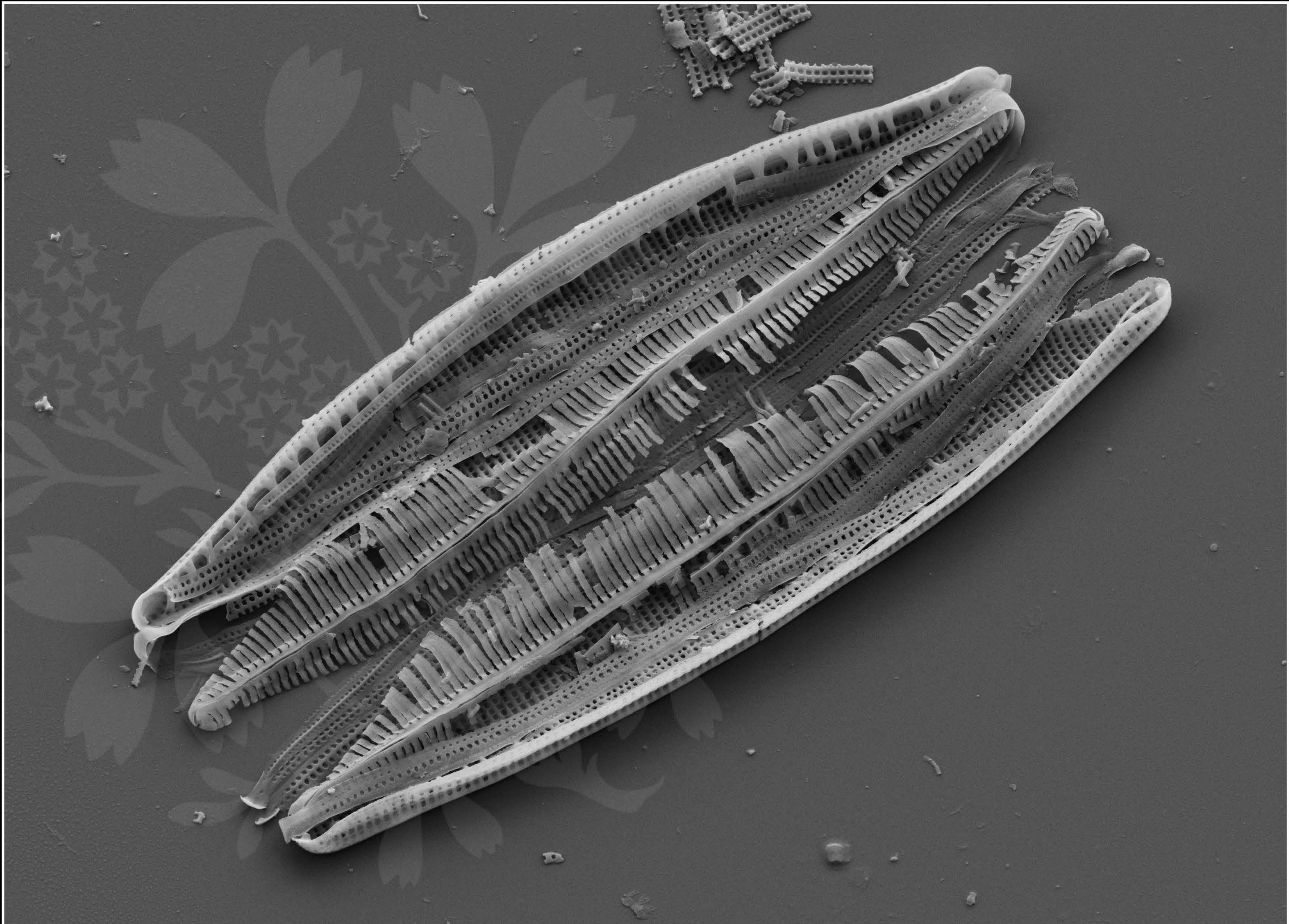
EHT = 5.00 kV

Signal A = SE2 Date :28 Feb 2018

WD = 3.8 mm

File Name = BC0330_17.tif





1 μm
└──┘

Mag = 8.00 K X

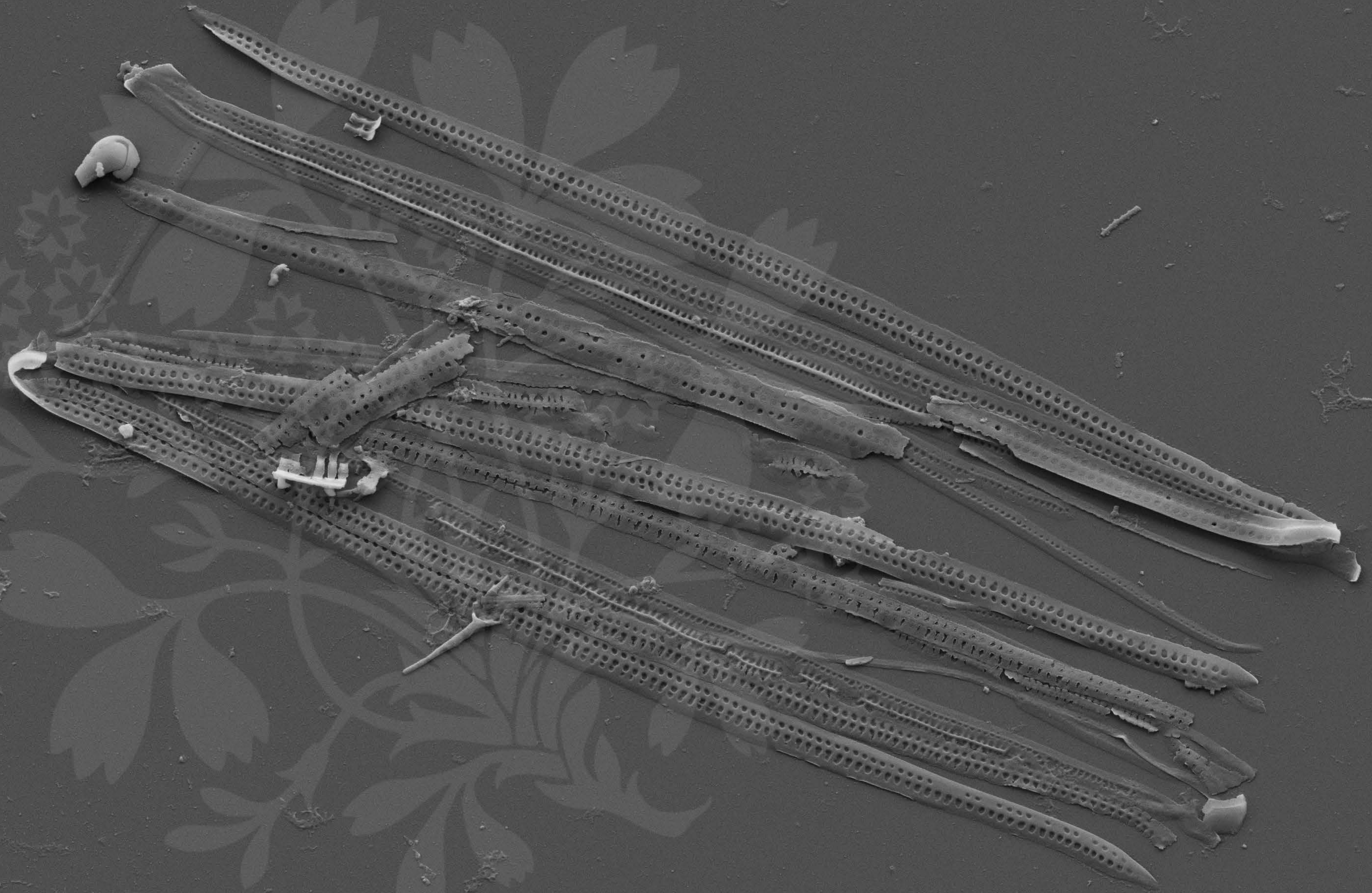
EHT = 5.00 kV

Signal A = SE2 Date :28 Feb 2018

WD = 3.8 mm

File Name = BC0330_18.tif





1 μm
┌───┐
└───┘

Mag = 9.00 K X

EHT = 5.00 kV

Signal A = SE2 Date :28 Feb 2018

WD = 3.8 mm

File Name = BC0330_19.tif

